

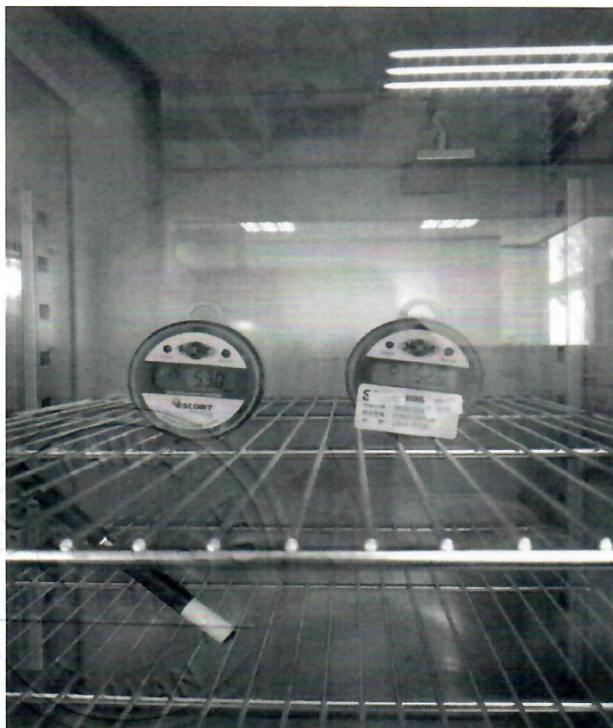


溫度部份：

器示值 (°C)	標準值 (°C)	器差值 (°C)
10.0	10.0	0.0
20.0	20.0	0.0
30.0	30.0	0.0

校正說明：

1. 器差值=器示值 - 標準值
 2. 器差% = $[(\text{器示值} - \text{標準值}) \div \text{標準值}] * 100$
 3. 器示值係指送校正件所顯示或設定之值
 4. 標準值係指工作標準件之輸出值或顯示值
 5. 校正能力係以約 95 % 信賴水準, $k = 2$ 之擴充不確定度表示
 6. 擴充不確定度：0.7 °C
 7. 上述擴充不確定度已包含校正件之不確定度評估結果
- THE END --



This document is issued by the Company subject to its General Conditions of Service printed overleaf, available on request or accessible at <http://www.sgs.com.tw/Terms-and-Conditions> and, for electronic format documents, subject to Terms and Conditions for Electronic Documents at <http://www.sgs.com.tw/Terms-and-Conditions>. Attention is drawn to the limitation of liability, indemnification and jurisdiction issues defined therein. Any holder of this document is advised that information contained hereon reflects the Company's findings at the time of its intervention only and within the limits of Client's instructions, if any. The Company's sole responsibility is to its Client and this document does not exonerate parties to a transaction from exercising all their rights and obligations under the transaction documents. This document cannot be reproduced except in full, without prior written approval of the Company. Any unauthorized alteration, forgery or falsification of the content or appearance of this document is unlawful and offenders may be prosecuted to the fullest extent of the law. Unless otherwise stated the results shown in this test report refer only to the sample(s) tested.